



### **COMPANY**

SACFORM Established in 2006

### **TEAM**

Engineers, technicians  
35 employees

### **SERVICE & SALES**

7/24 Authorized  
Technical Service and Sales

### **EXPORT**

Leaving aside European countries, we have references in the Middle east, Africa, South America, Central Asia and export to more than 30 countries

### **FACTORY**

Production and R&D activities are carried out in our modern 4000m2 factory that is located in Dudullu ,Istanbul in the Industrial zone.

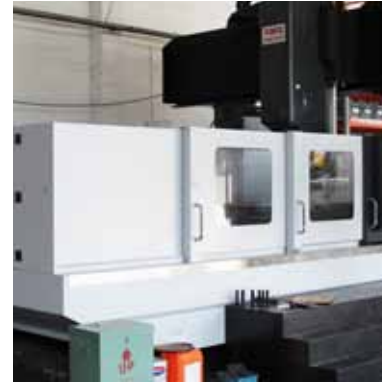
### **DOMESTIC SALES REPRESENTATIVES**

Leaving aside European countries, we have references in the Middle east, Africa, South America, Central Asia and export to more than 30 countries

## FACTORY & PRODUCTION

**SACFORM produces its products with latest technologies in its modern factory in Istanbul**

- The Sacform Plant has the capacity to produce 650 Press Feeder Lines and 32 Production Lines.
- The production plant is an industrial facility that is environmentally sensitive and consumes little energy, with intelligent building control features



## PERFORATED SHEET METAL PRODUCTION LINE

### Areas of Usage:

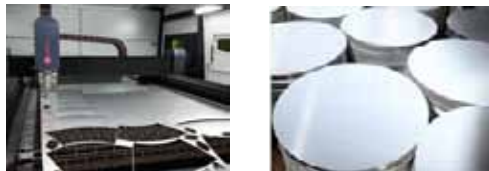
- Metal Suspended Ceilings
- Panels For Decoration Purpose
- Agricultural Seed Filters
- Acoustic Sound Insulation Panels
- Professional Kitchen Equipment
- Ventilation and Air Conditioning Ducts
- Building Facade Systems



## COIL FED LASER CUTTING MACHINE

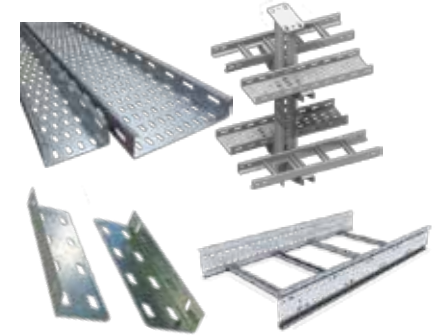
### Mainly in Stainless Steel Production:

- Ashtrays
- Cooking Pot
- Steel Bowl
- Fork, Spoon, Knife
- Baking Tray
- Cooking Devices



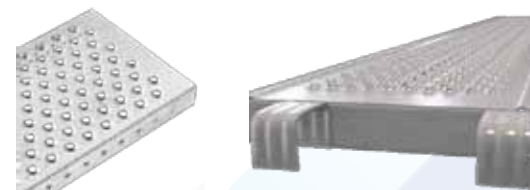
## CABLE TRAY PRODUCTION LINE

- Standard Size Cable Tray
- Heavy Duty Type Cable Tray
- Cable Tray Covers
- Cable Ladder
- Strap and Support Products
- Marine Type Cable Tray



## SCAFFOLDING SYSTEMS PRODUCTION

- Scaffolding Boards are used in indoor and outdoor areas of industrial plants since they are non-slippery, water and fire resistant, hygienic, resistant to environmental factors and ergonomic.
- Constructional Scaffolding Systems
- Walking Platforms
- Ladder systems



## SHUTTER PRODUCTION LINES

Shutters are highly preferred in limited places such as Store Doors due to their durability and foldability characteristics.

- Non-Perforated Shutter Systems
- Perforated Shutter Systems
- Shutter Vertical Profiles



## STORAGE RACK PRODUCTION LINES

- Heavy Duty Shelf Systems
- Warehouse Shelf Systems
- Market Shelving Systems
  - Back Panel
  - Top Shelves
  - Horizontal and Vertical Profiles
  - Shelf Support Products



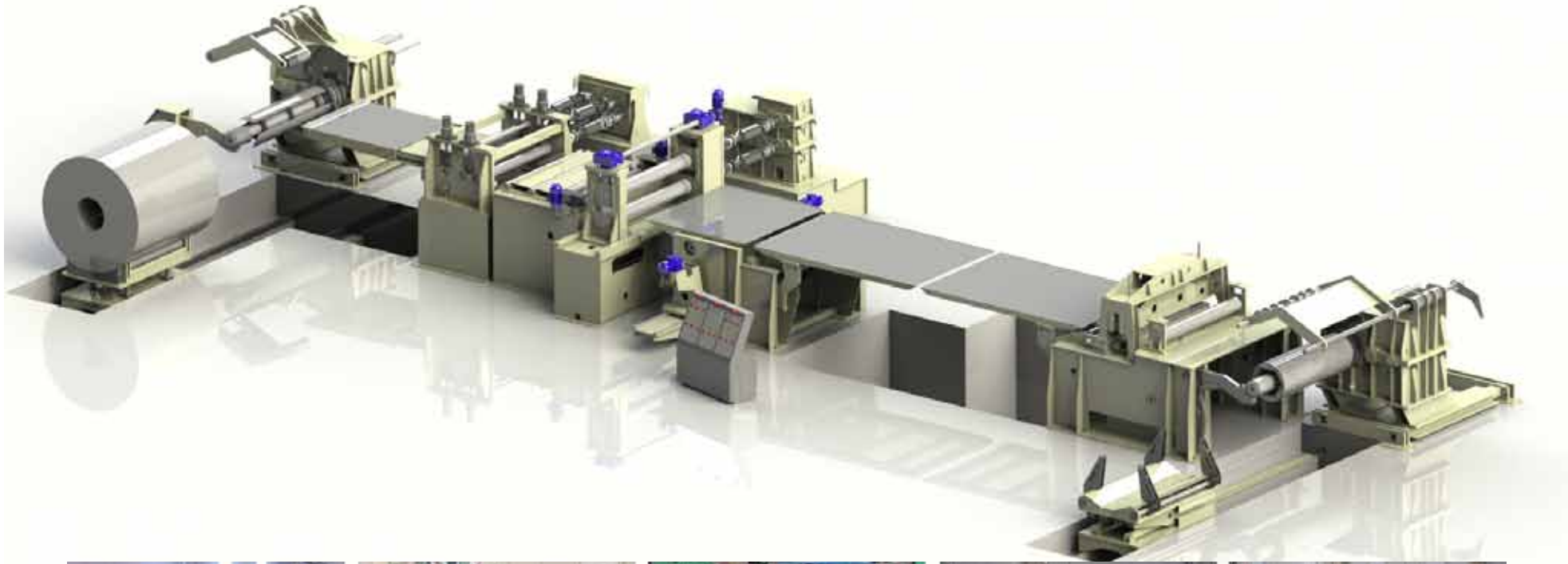
## Automotive Spare Parts, Furniture Hardware, Metal Furniture, Doors, Windows, White Goods and Construction Materials

- Vehicle Body Parts
- Furniture Hinges
- Cabinet Rails
- Door Lock Brackets
- Window Mirror and Lock Brackets
- Server Cabin Panels and Internal Profiles
- Electrical Lighting Products
- Natural Gas Pipe and Air Handle Clamps
- C, Z, Omega Profiles
- Drywall Panel Profiles
- White Goods Panels
- Industrial kitchen equipment



## COIL SLITTING LINES

- Slitting Lines are designed to process all kinds of coil material with widths of 600 - 2000 mm and thicknesses of 0.3 - 6 mm
- Slitting Speed Capacity up to 120 m / min
- High Slitting Accuracy
- Changes in the line details and pit requirements are made according to material thicknesses and widths



## COIL CUT TO LENGTH LINES

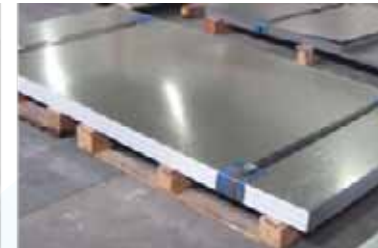
- Cut to Length Lines are designed to process all kinds of coil material with sheet widths of 600 - 2000 mm and thicknesses of 0.3 - 8 mm.
- Fixed, Fly and Rotary Shear options with high cutting accuracy
- Changes in the line details and pit requirements are made according to material thicknesses and widths
- Stacking system Vacuum, Magnetic, Transport, Oscillating are the 4 types of Direct Drops



3 – 10 MM THICKNESS X 1000 – 2000 MM WIDTH X 10 – 40 TON



0.3 – 4 MM THICKNESS X 600 – 1600 MM WIDTH X 6 – 15 TON

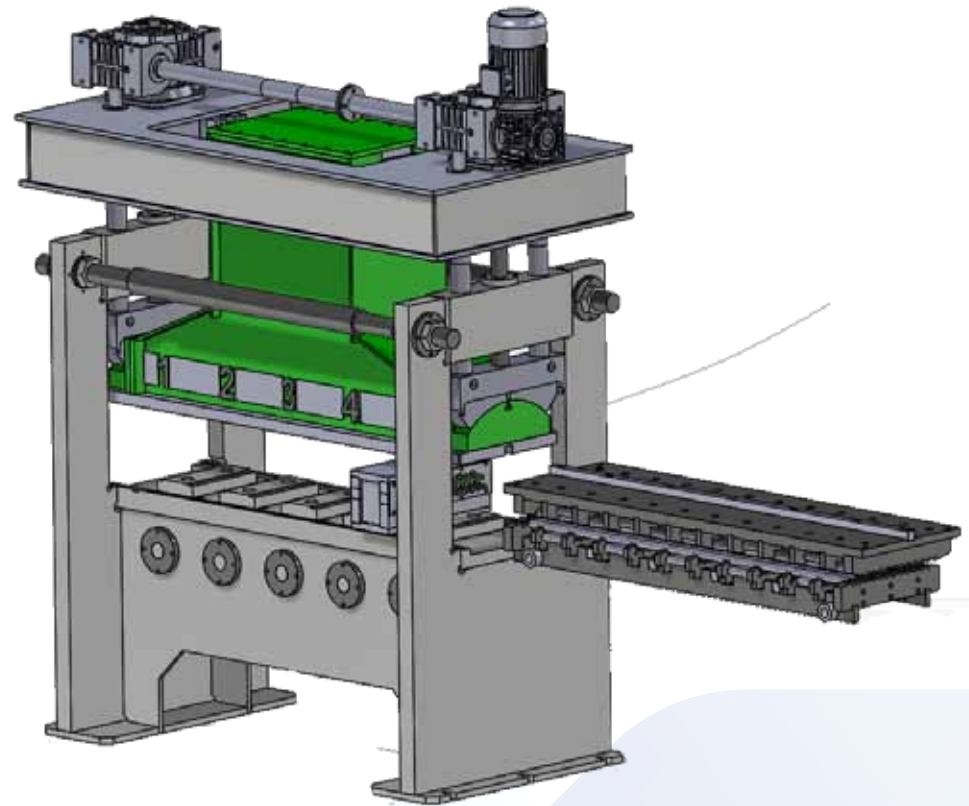


## LEVELERS

Leveler is designed to straighten sheet plates very smoothly by releasing stress on the material.

- 30 - 2000 mm Width Capacity
- 0.4 - 12 mm Thickness Capacity
- 27 Rollers and 9 Motors

### LEVELER 4-HI & 6-HI





## COIL FED LASER CUTTING LINE

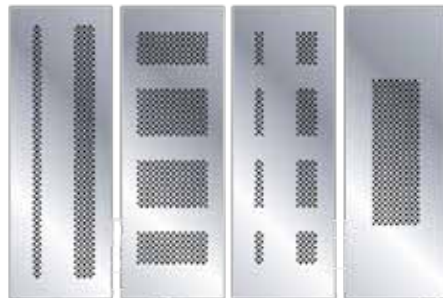
- Coil Fed Laser Machine is able to work with coil of 0.3 -4 mm thickness and width and coil weight of up 1600 mm and 20,000 kg respectively .
- Coil Fed Laser Line's decrease the time, workforce requirement and cost, as well as increase the productivity and profitability.
- Feeding laser by coil decreases raw material costs by minimizing the wastage. Most of the coil is used up production, lessening waste.



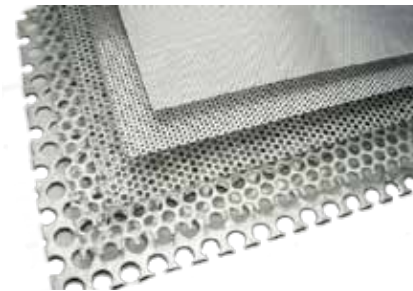
## PERFORATED SHEET METAL PRODUCTION LINE



FREE PERFORATION



VARIOUS PANEL



DECORATION PANEL



SEED FILTER

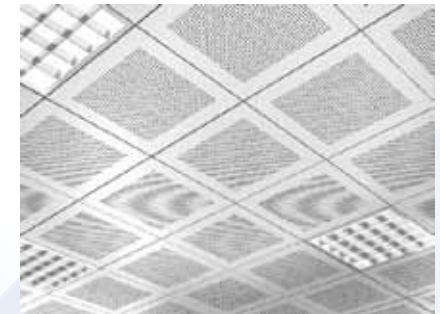
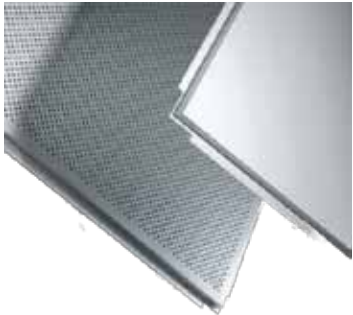
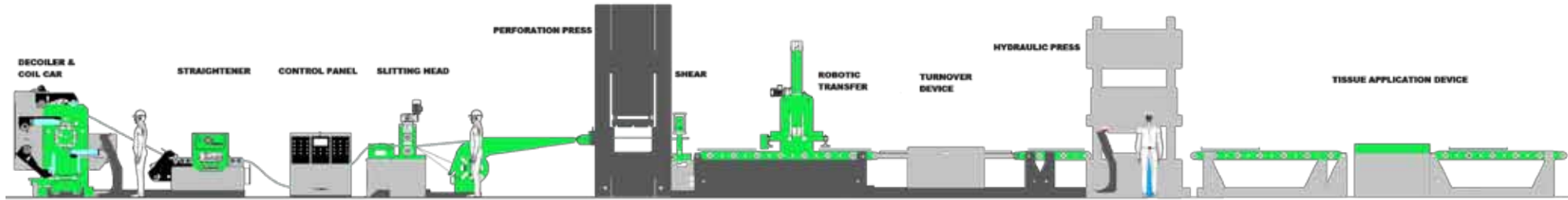


METAL GOODS PANEL



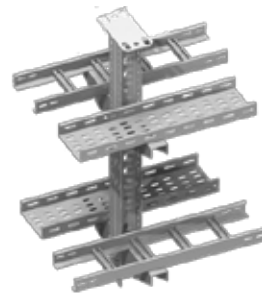
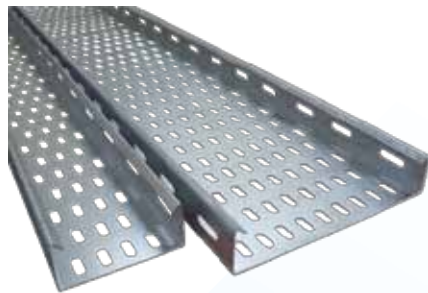
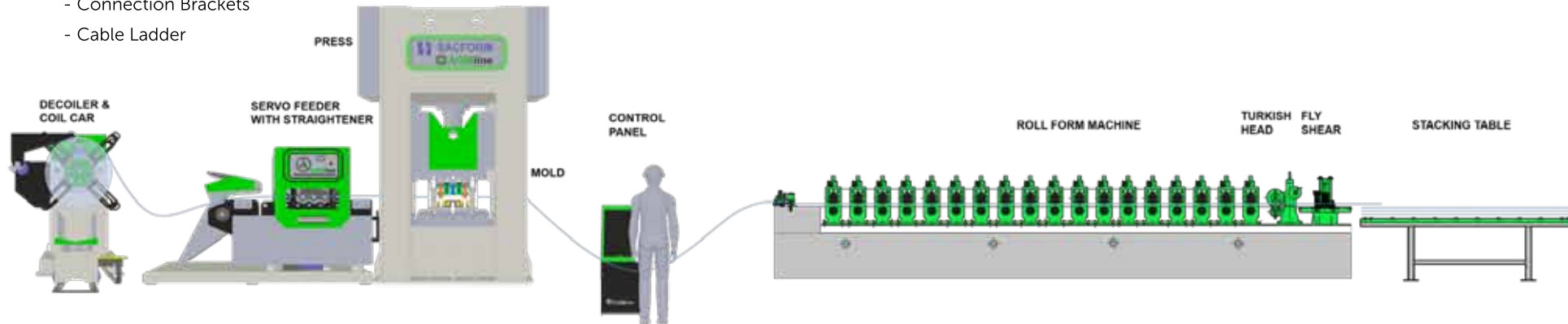
## SUSPENDED CEILING PRODUCTION LINE

- Suspended Ceiling Panels of Clip-in, Lay-in and Lay-on models at dimensions 300x300, 600x600, 600x1200 mm.
- Special Sized Suspended Ceiling Panels are designed up to 2000mm width.
- Galvanized Steel, Stainless Steel, Aluminum, Cold Rolled Steel, Hot Rolled Steel, Brass, Copper, Thin Metals, Monel, Inconel and Titanium.



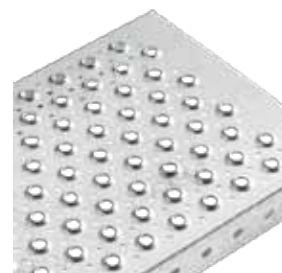
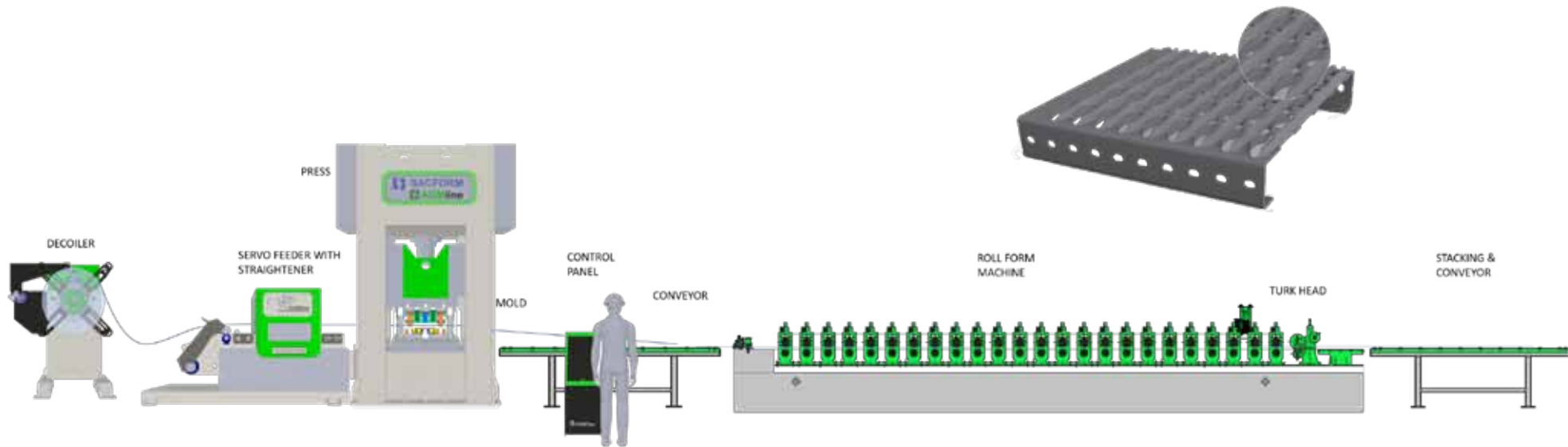
## CABLE TRAY PRODUCTION LINE

- Cable Tray production with web dimension from 50 mm up to 900 mm
- Double Sided Adjustable Roll Form Machine
- Production can be done with automatic programmable web and flange dimension
- Perforation Pattern can be adjusted
- Production Speed Capacity of 16 meters / min.
- Also Production of:
  - Cable Tray Cover
  - Connection Brackets
  - Cable Ladder



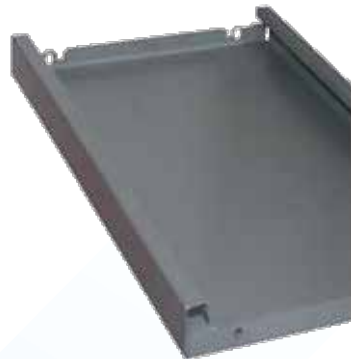
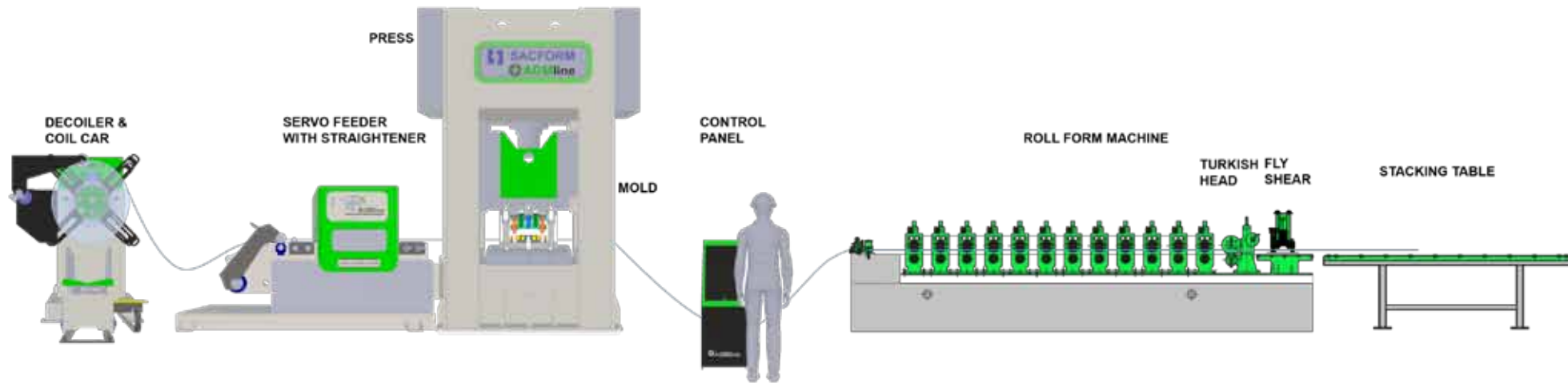
## SCAFFOLDING PRODUCTION LINE

- Production Lines with capacities of 300 - 600 mm width, 1,5 - 2 mm thickness and 4 - 6 Tons coil weight capacity.
- Assembly Parts Production and Profile Preparation Solutions for different type of scaffolding systems.



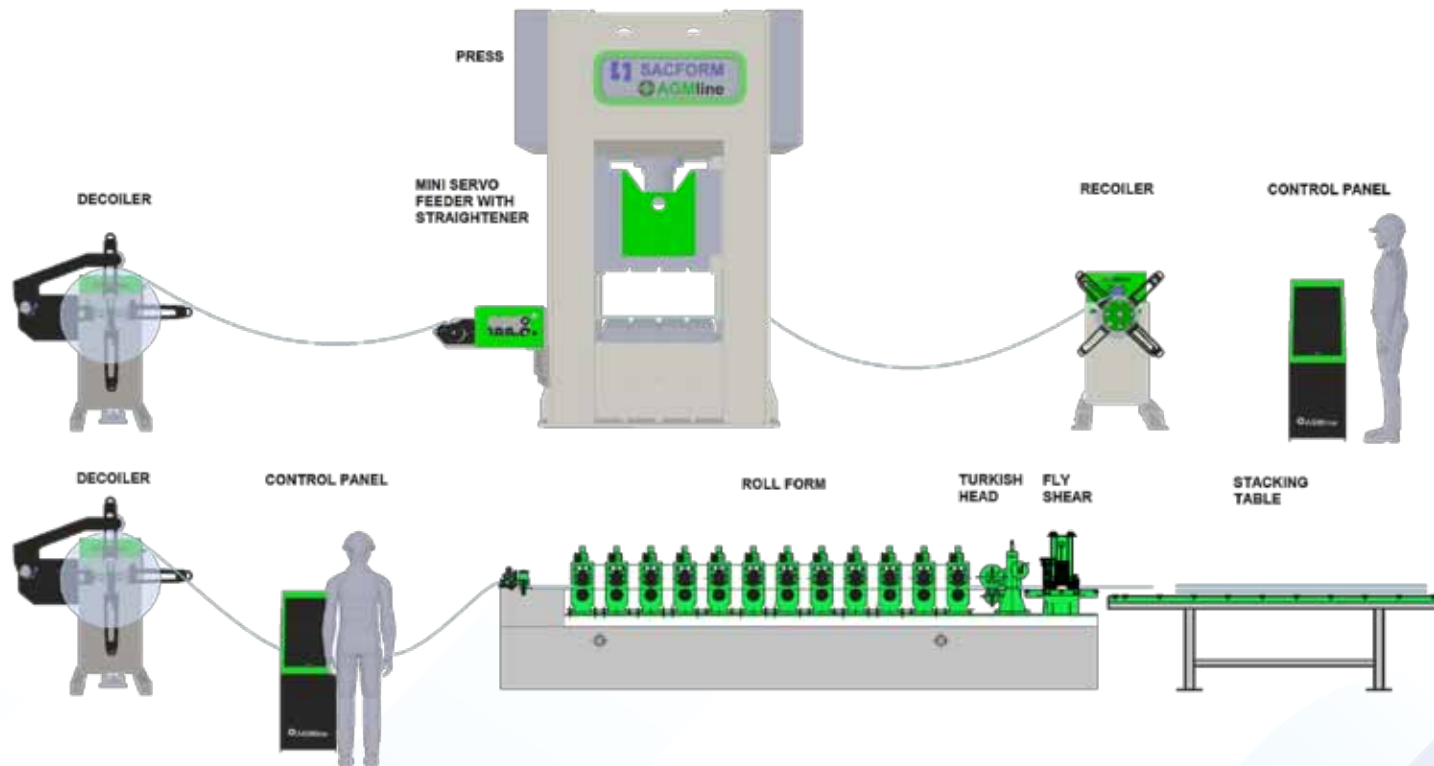
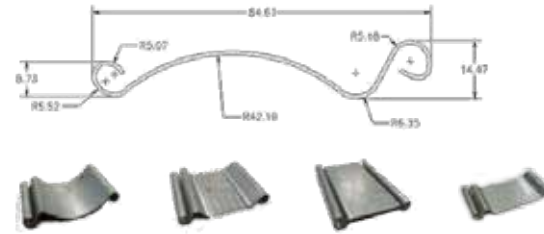
## STORAGE RACK & MARKET SHELF PRODUCTION LINES

- Double Head Opener to Eliminates Time Lost in the Roll Changing Process
- High production speed with Fly Shear Cutting System
- Both vertical and Horizontal profiles can be produced on the same line



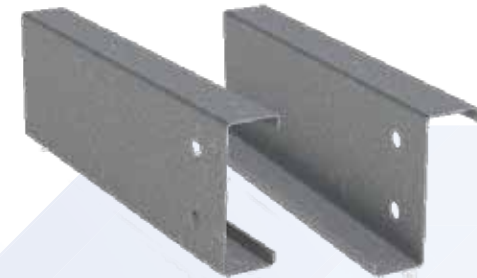
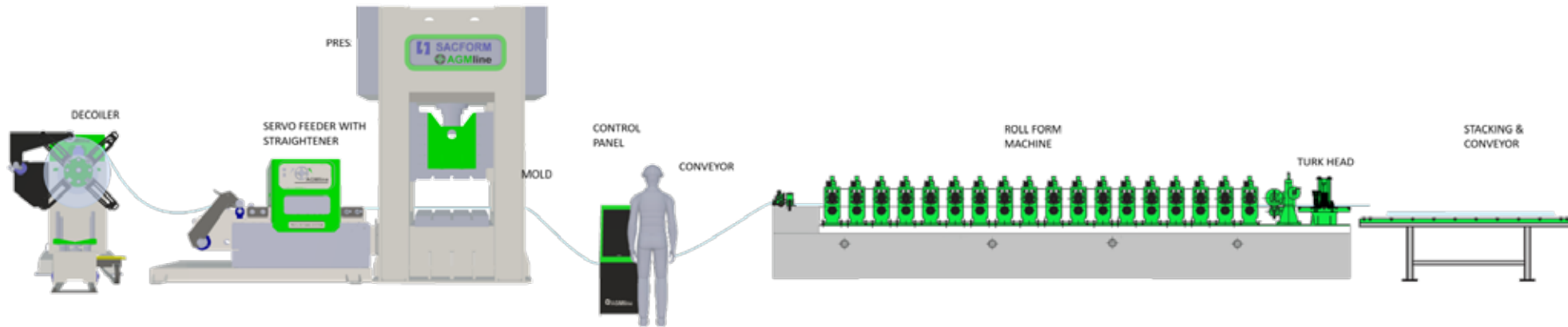
## ROLLER SHUTTER PRODUCTION LINES

- Different types of shutter profile production
- Production solutions for perforated shutters
- Double Head Opener to Eliminates Time Lost in the Roll Changing Process
- High production speed achieved with Fly Shear Cutting System



## PURLIN PROFILES U, C, Z & OMEGA PRODUCTION LINES

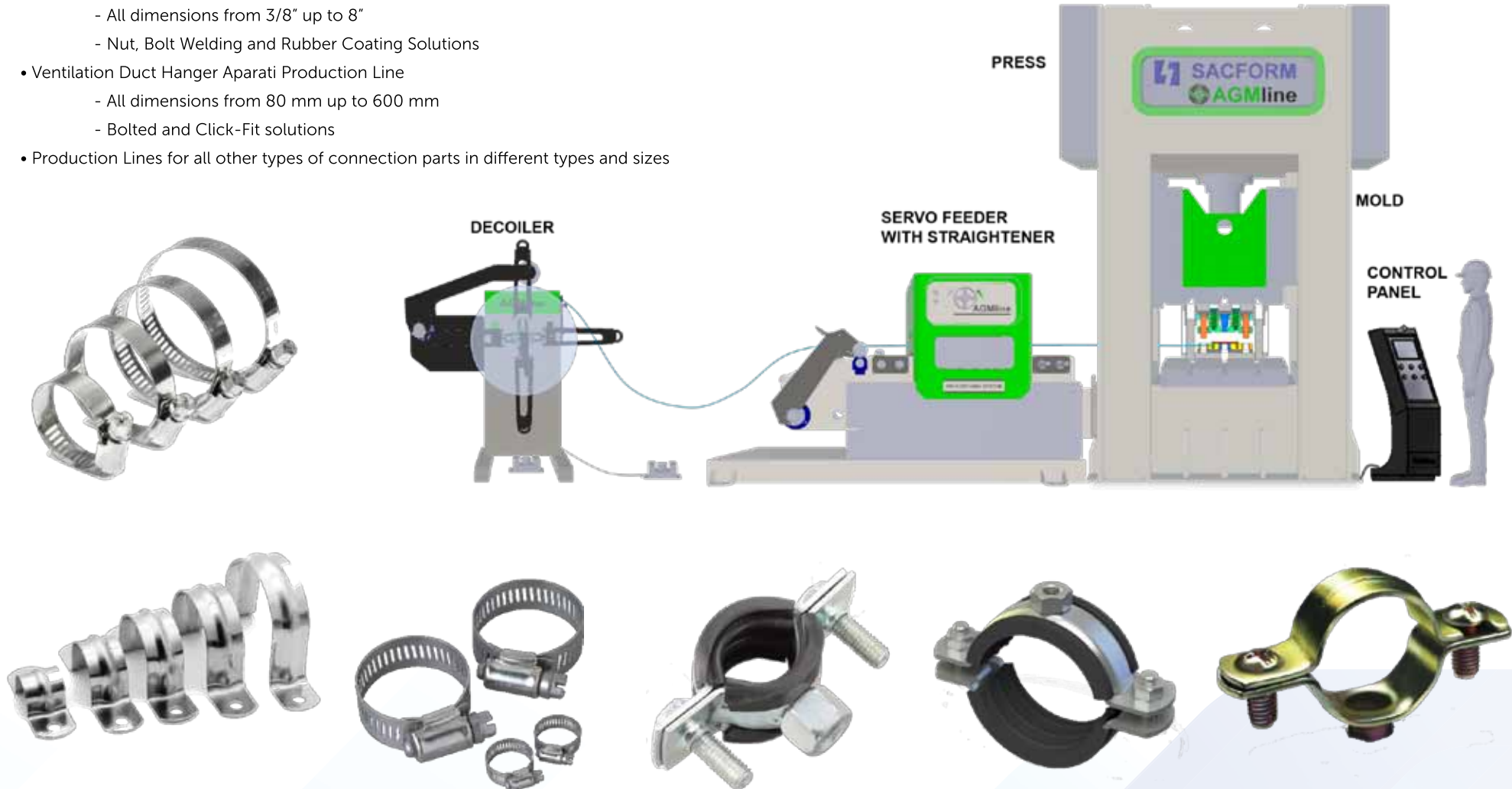
- High speed profiling with Fly Shear Cutting System
- Integration with Double Head Decoiler to eliminate coil change time.
- Possibility of profiling U,C, Z ve Omega profiles in a single line.
- Fully automatic and adjustable profile width and length.



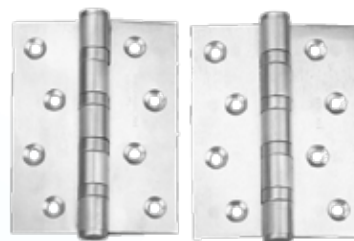
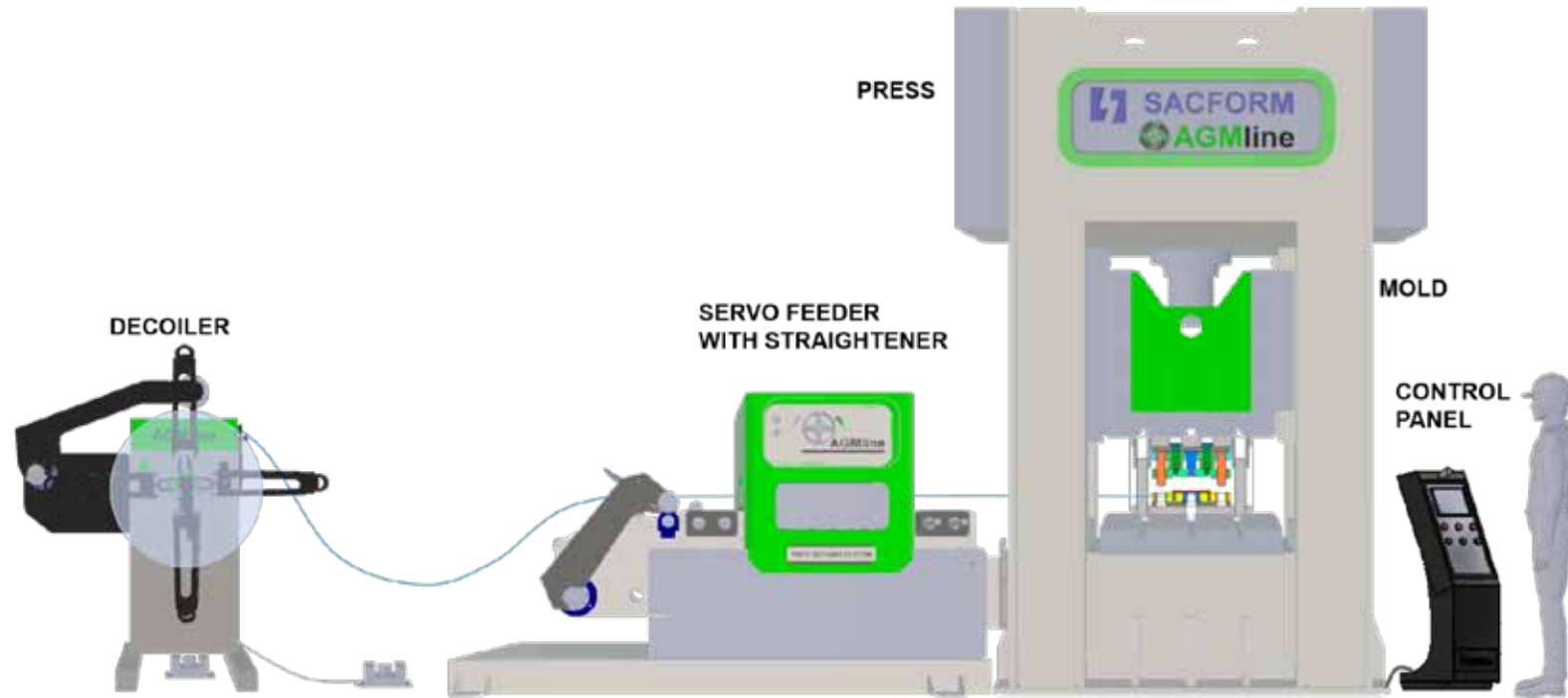


## HOSE & DUCT CLAMP AND OTHER CONNECTION PARTS PRODUCTION LINE

- Natural Gas Clamp Production Line
  - All dimensions from 3/8" up to 8"
  - Nut, Bolt Welding and Rubber Coating Solutions
- Ventilation Duct Hanger Aparati Production Line
  - All dimensions from 80 mm up to 600 mm
  - Bolted and Click-Fit solutions
- Production Lines for all other types of connection parts in different types and sizes



METAL FURNITURE AND FURNITURE HARDWARE PRODUCTION LINE



AFRICA  
AMERICA  
ASIA  
AUSTRALIA  
EUROPE  
MIDDLEEAST



## QUALITY POLICY

Within the framework of total quality management, ISO 9001-2008 Certificate has been obtained with the contribution of all of our employees with customer focused production.

Sacform has had a CE Quality System Certificate since 2013 and is sensitively applying these standards. Sacform started to use the production tracking and planning program developed by its engineers since the beginning of 2017 in line with its quality objectives and the success of this program in production, sales and after-sales services has made the company's quality targets applicable at the top level



## FACTORY

Address: Dudullu Org. San. Bolg. 3. Cadde No:12 Umraniye / ISTANBUL / TURKEY

Tel: +90 216 314 65 94 - Fax: +90 216 314 51 59

Email: [info@sacform.com](mailto:info@sacform.com) [www.sacform.com](http://www.sacform.com) - [www.agmline.com](http://www.agmline.com)