

HYDRAULIC PRESS AS ECCENTRIC PRESS **SPEED**

“Where Speed meets Quality”

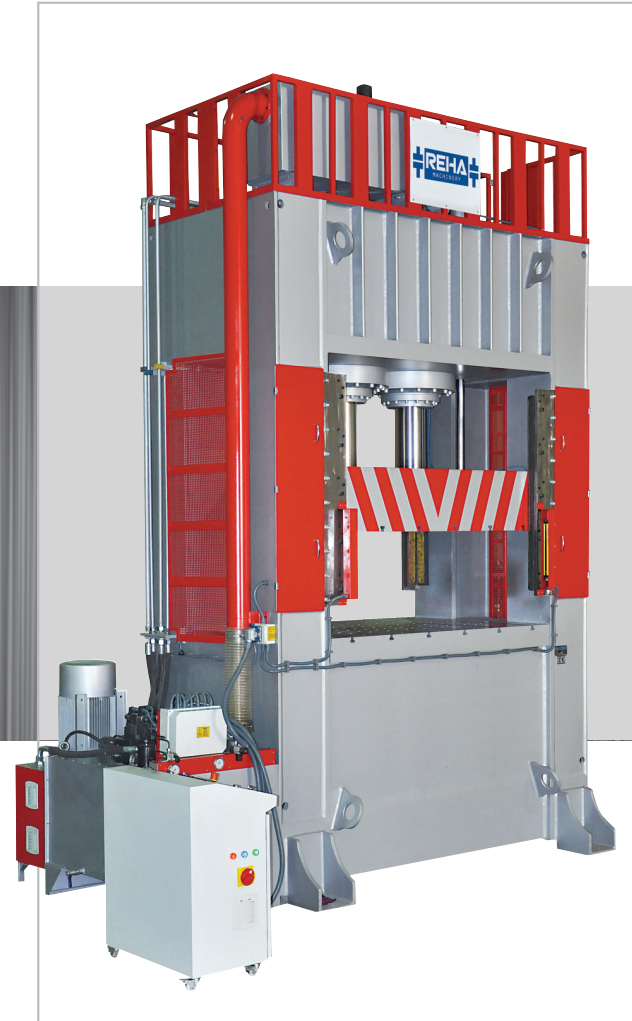
From 30 Tons to 3000 Tons

**C FRAME
HYDRAULIC
PRESS**



**A FIRST
IN TURKEY**

**H FRAME
HYDRAULIC DEEP
DRAWING PRESS**



REHA
MACHINERY
SINCE 1986

CE

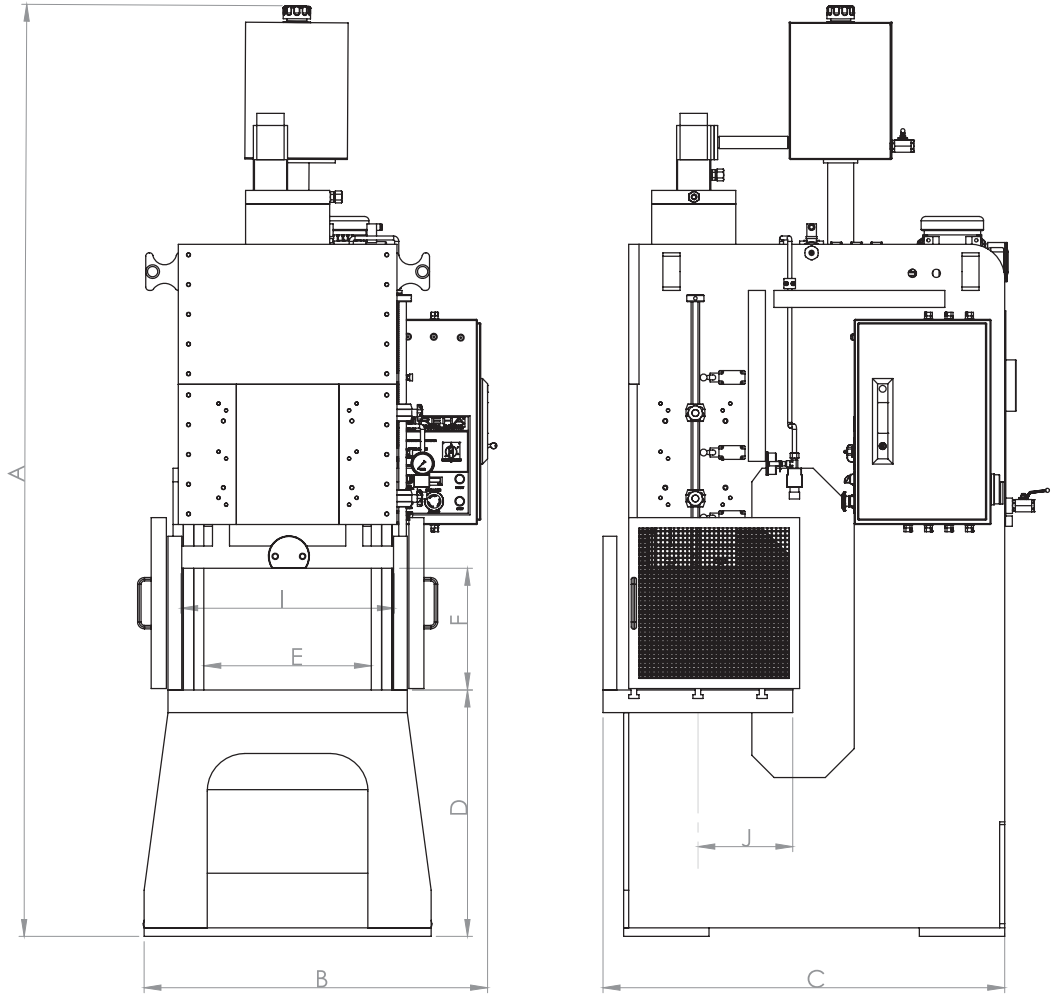
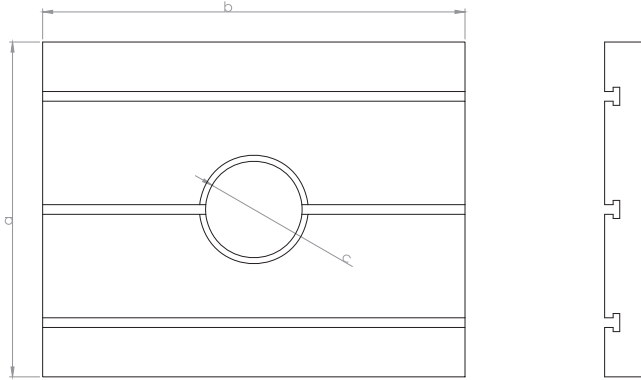


- Sheet metal cuttindies.
- Sheet metal forming tools
- Hot forged brass
- Deep drawing tools
- Cold forged aluminium steel
- Automotive and spare parts industry
- White goods
- Industrial kitchen
- Industrial cooling
- Kitchen appliances
- Construction and building industry.
- No pit required.

C FRAME HYDRAULIC PRESS

- Steel construction body
- 8 on the surface of the guide ram
- T-Channel home plate and ram
- Precision adjustable stroke
- Automatic central lubrication
- Electronic automatic counter
- PLC applications and screen
- Finger protection light barier
- Compliance with CE norms
- Non-Standard table and stroke length
- Two - Hand Control
- Electric Control Pedal
- Ram inside the hydraulic ejector
- Ejection available on ram + table
- European automotive catering manufacturers, aerospace industries, plastic industries and many more.

C FRAME
HYDRAULIC
PRESS TABLE



C FRAME HYDRAULIC PRESS

TECHNICAL SPECIFICATIONS		PRESS TYPE AND TONS													
MODEL		RHCP 30180	RHCP 40200	RHCP 60200	RHCP 80 250	RHCP 100250	RHCP 125275	RHCP 150300	RHCP 200325	RHCP 250350	RHCP 300350	RHCP 400400	RHCP 500450	RHCP 600450	
CAPACITY	TONS	30	40	60	80	100	125	150	200	250	300	400	500	600	
STROKE	mm	0 - 180	0 - 200	0 - 220	0 - 250	0 - 250	0 - 275	0 - 300	0 - 325	0 - 350	0 - 350	0 - 400	0 - 450	0 - 450	
TABLE DIMENSIONS	a x b	mm	450 x 550	460 x 580	550 x 700	600 x 740	600 x 800	600 x 820	640 x 930	720 x 950	740 x 980	760 x 1050	780 X 1100	800 X 1200	850 X 1200
DAYLIGHT	F	mm	300	330	350	380	400	425	450	500	550	600	650	700	700
RAM SURFACE	I	mm	460 x 150	500 x 195	625 X 240	625 x 250	750 x 300	750 x 320	770 x 340	800 x 360	850 x 380	900 x 400	950 X 500	1000 X 600	1000 X 600
DISTANCE BETWEEN TWO BODY	E	mm	400	450	550	550	550	600	630	650	675	700	750	800	800
THROAT DEPTH	J	mm	225	230	275	300	300	300	330	360	370	380	390	400	420
TABLE DIAMETER HOLE		mm	120	150	160	190	200	220	240	250	260	270	280	300	300
RAM SPEED UNLOADED		mm/sec	330	330	280	280	270	270	260	240	240	240	200	200	200
RAM SPEED UNDER LOADED		mm/sec	26	26	24	23	22	20	20	18	18	16	14	14	14
RAM RETURN SPEED		mm/sec	240	240	235	235	230	230	220	220	220	220	180	180	180
PRESS WIDTH	B	mm	840	880	1000	1050	1070	1100	1200	1300	1450	1600	1700	1750	1800
PRESS HEIGHT	A	mm	2300	2350	2600	2900	3250	3250	3500	3700	3950	4250	4350	4500	4650
PRESS DEPTH	C	mm	1130	1150	1400	1300	1500	1650	1800	2100	2250	2350	2400	2500	2600
PRESS WEIGHT		Kg	1400	2200	3400	3900	4600	5700	8900	12000	14250	16100	21000	26000	28500
MOTRO POWER		Kw	5,5	7,5	11	11	16	16	18	22	22	30	37	45	45
MOTOR SPEED		rev/min.	1450	1450	1450	1450	1450	1450	1450	1450	1450	1450	1450	1450	1450

WE RESERVE THE RIGHTS TO MAKE CHANGES IN DESING AND DRAWING.



- Sheet metal forms.
- Deep drawing tools.
- Hot aluminum and steel forging
- Automotive and spare parts industry
- Food industry.
- Electrical panel.
- Industrial cooling
- White Goods
- Construction and building industry.
- Sheet metal cutting dies.
- No pit required.

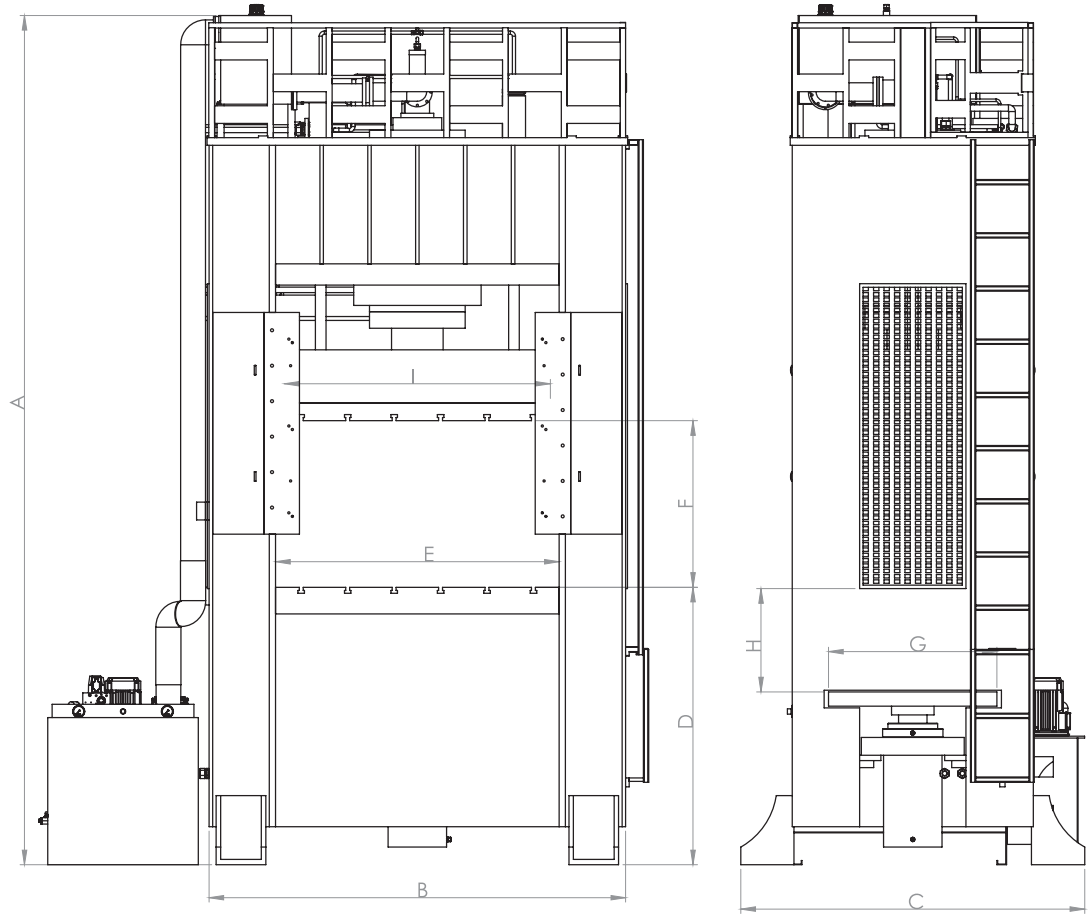
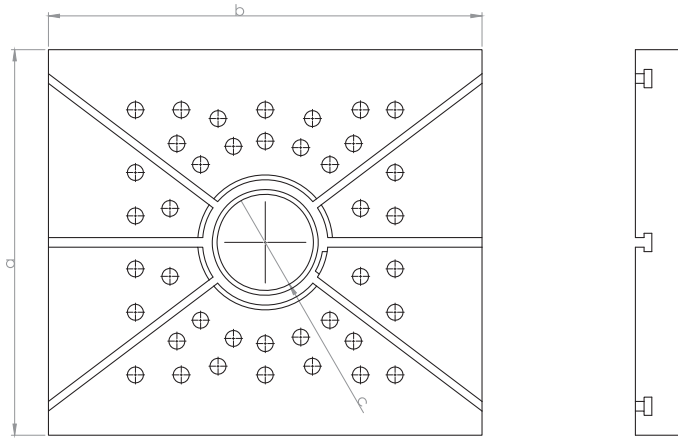
CE



H FRAME HYDRAULIC DEEP DRAWING PRESS

- Steel construction body
- 8 on the surface of the guide ram
- C-Channel home plate and ram
- Precision adjustable stroke
- Automatic central lubrication
- Electronic automatic counter
- PLC applications and screen
- Finger protection light barrier
- Compliance with CE norms
- Non-Standard table and stroke length
- Two - Hand Control
- Electric Control Pedal
- Ram inside the hydraulic ejector
- Ejection available on ram + table
- European automotive catering manufacturers, aerospace industries, plastic industries and many more.

**H FRAME
HYDRAULIC DEEP
DRAWING
PRESS TABLE**



**H FRAME
HYDRAULIC DEEP
DRAWING PRESS**

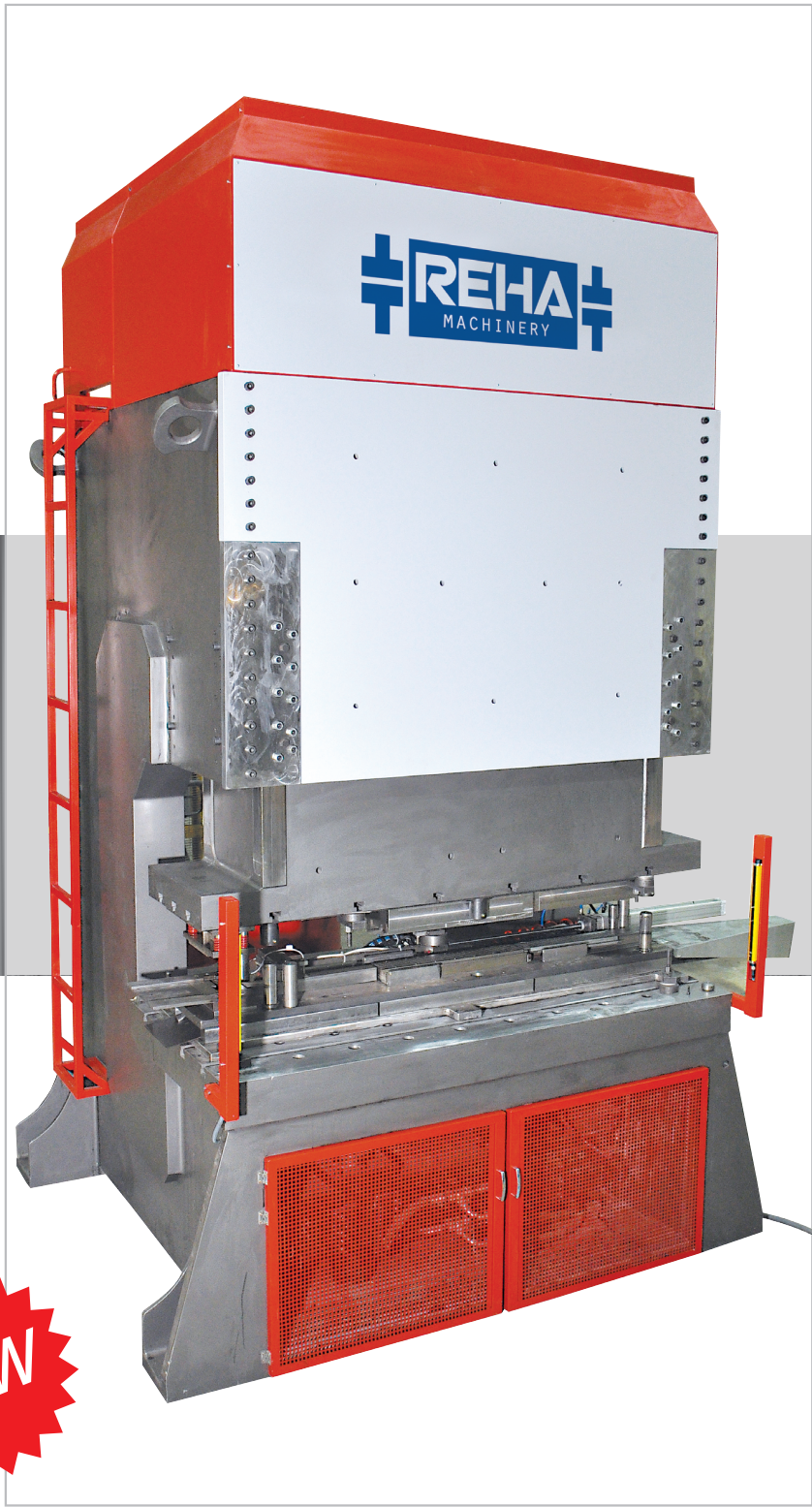
TECHNICAL SPECIFICATIONS		PRESS TYPE AND TONS														
MODEL		RHHSP 100600	RHHSP 150650	RHHSP 200700	RHHSP 300800	RHHSP 400800	RHHSP 5001000	RHHSP 6001000	RHHSP 8001000	RHHSP 10001000	RHHSP 12001000	RHHSP 15001000	RHHSP 20001200	RHHSP 25001250	RHHSP 30001300	
CAPACITY	TONS	100	150	200	300	400	500	600	800	1000	1200	1500	2000	2500	3000	
CUSHION PRESSURE	TONS	40	60	80	120	160	200	240	320	400	480	600	800	1000	1200	
STROKE	mm	0 - 600	0 - 650	0 - 700	0 - 800	0 - 800	0 - 900	0 - 1000	0 - 1000	0 - 1000	0 - 1000	0 - 1000	0 - 1200	0 - 1250	0 - 1300	
CUSHION STROKE	H mm	0 - 250	0 - 275	0 - 300	0 - 300	0 - 330	0 - 350	0 - 360	0 - 430	0 - 450	0 - 450	0 - 450	0 - 550	0 - 550	0 - 600	
TABLE DIMENSIONS	a x b mm	800 x 1000	800 x 1000	850 x 1200	900 x 1400	1000 x 1500	1200 x 1800	1300 x 1800	1400 x 2000	1500 x 2200	1500 x 2200	1500 X 2300	1500 X 2400	1500 X 2500	1600 X 2800	
DAYLIGHT	F mm	800	850	900	950	1000	1100	1150	1200	1300	1300	1300	1500	1500	1600	
RAM SURFACE	I mm	700 x 1000	700 x 1000	750 x 1200	800 x 1400	900 x 1500	1200 x 1800	1300 x 1800	1400 x 2000	1500 x 2500	1500 x 2200	1500 X 2300	1500 X 2400	1500 X 2500	1600 X 2800	
DISTANCE BETWEEN TWO BODY	E mm	1050	1050	1250	1450	1550	1850	1850	2050	2250	2250	2350	2450	2250	2850	
RAM SPEED UNLOADED	mm/sec	200	200	200	200	200	200	200	200	200	200	180	170	165	160	
RAM SPEED UNDER LOADED	mm/sec	20	20	20	18	16	16	12	12	10	10	10	10	9	8	
RAM RETURN SPEED	mm/sec	220	220	200	200	180	180	150	150	130	130	180	170	165	160	
PRESS WIDTH	B mm	1750	1750	1000	2200	2300	2500	2500	2750	3000	3100	3200	3300	3500	3800	
PRESS HEIGHT	A mm	4500	4900	5000	5200	5500	5900	5950	5950	6000	6000	6000	6200	6300	6500	
PRESS DEPTH	C mm	1400	1400	1450	1500	1600	1800	1900	2100	2250	2300	2400	2400	2450	2500	
PRESS WEIGHT	Kg	14000	17000	19000	24000	26500	32000	48000	68000	98000	108000	115000	124000	138000	155000	
MOTRO POWER	Kw	11	15	15	22	22	22	30	30	37	45	55	75	75	90	
MOTOR SPEED	rev/min.	1450	1450	1450	1450	1450	1450	1450	1450	1450	1450	1450	1450	1450	1450	

WE RESERVE THE RIGHTS TO MAKE CHANGES IN DESING AND DRAWING.



- Sheet metal cutting tools
- Sheet metal form tools
- Hot brass forging
- Hot steel forging
- Deep drawing molds
- Cold steel forging and forming
- Deep drawing molds
- Cold forged aluminum and steel
- Automotive and spare parts industry
- White goods
- No pit required.

CE

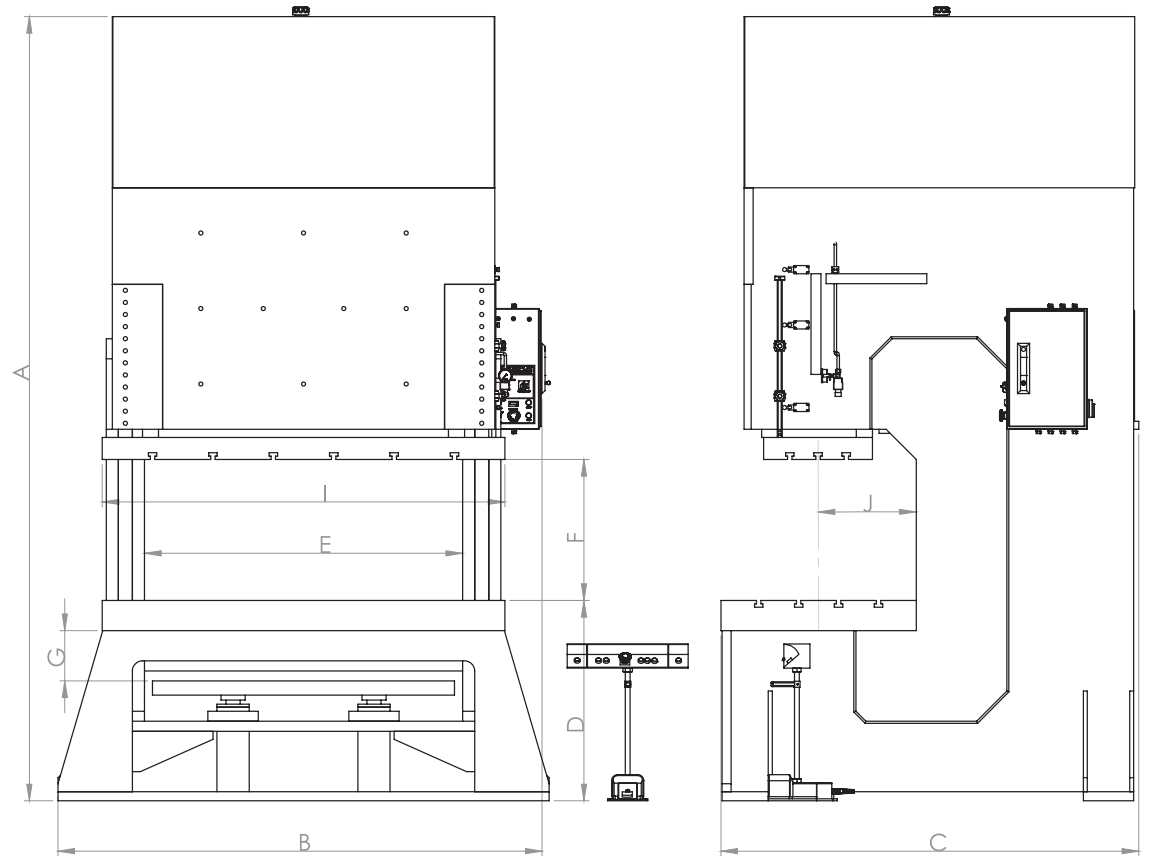
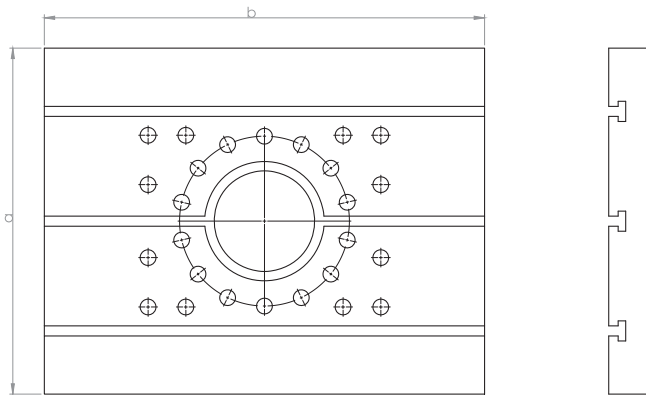


NEW

C FRAME HYDRAULIC TRANSFER PRESS

- Steel construction body
- 8 on the surface of the guide ram
- T-Channel home plate and ram
- Precision adjustable stroke
- Automatic central lubrication
- Electronic automatic counter
- PLC applications and screen
- Finger protection light barrier
- Compliance with CE norms
- Non-Standard table and stroke length
- Two - Hand Control
- Electric Control Pedal
- Ram inside the hydraulic ejector
- Ejection available on ram + table
- European automotive catering manufacturers, aerospace industries, plastic industries and many more.

C FRAME
HYDRAULIC
TRANSFER
PRESS TABLE



**C FRAME
HYDRAULIC
TRANSFER PRESS**

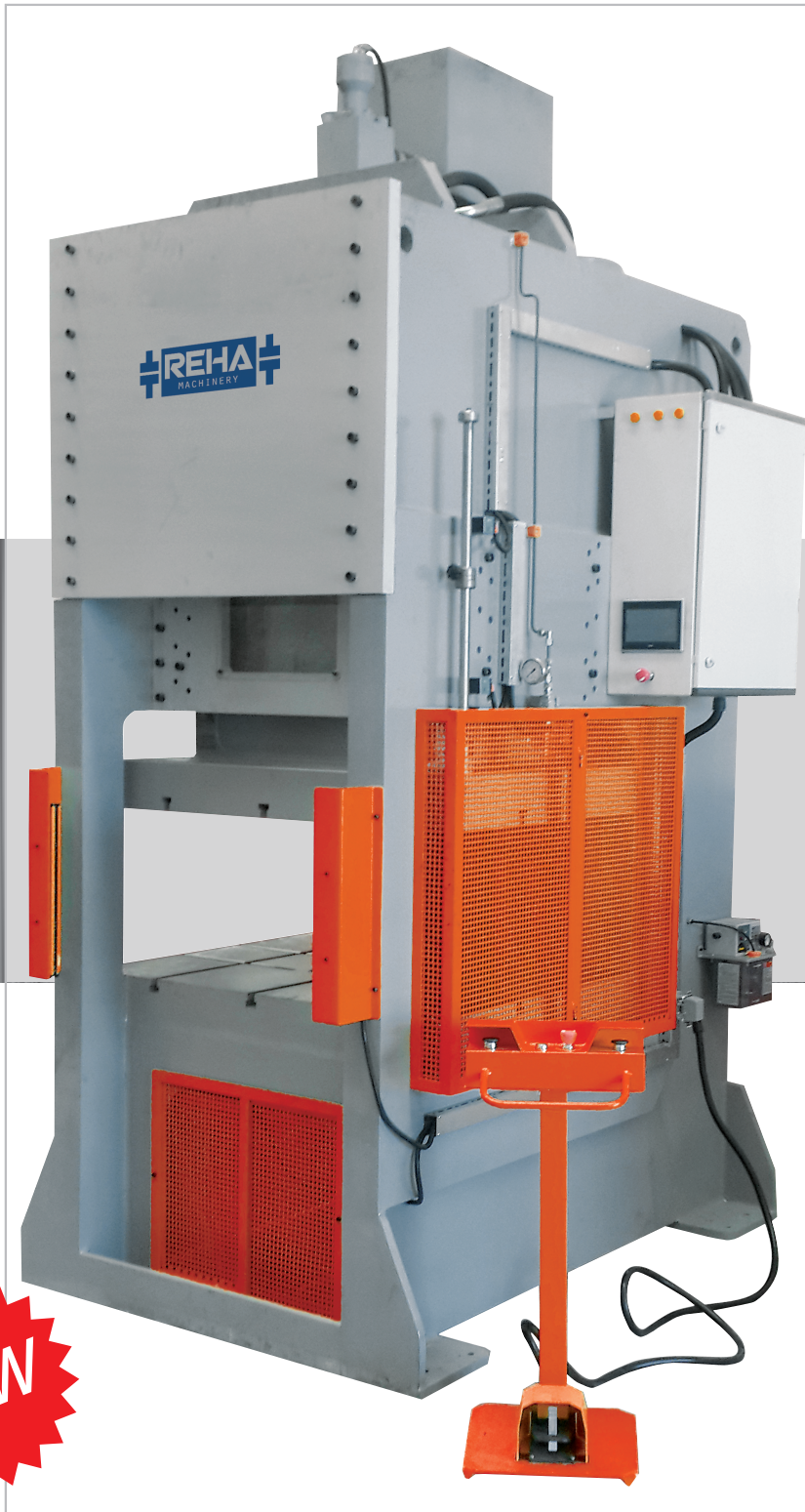
TECHNICAL SPECIFICATIONS		PRESS TYPE AND TONS								
MODEL			RHCTP 100400	RHCTP 150500	RHCTP 200500	RHCTP 250550	RHCTP 300600	RHCTP 400600	RHCTP 500650	RHCTP 600700
CAPACITY		TONS	100	150	200	250	300	400	500	600
CUSHION PRESSURE		TONS	40	60	80	100	120	160	200	240
STROKE		mm	0 - 400	0 - 500	0 - 500	0 - 550	0 - 600	0 - 600	0 - 650	0 - 700
CUSHION STROKE	G	mm	0 - 250	0 - 220	0 - 300	0 - 325	0 - 350	0 - 350	0 - 380	0 - 400
TABLE DIMENSIONS	a x b	mm	750 x 1500	800 x 1700	900 x 2000	950 x 2200	950 x 2400	950 X 2600	1000 X 2800	1000 X 3000
DAYLIGHT	F	mm	600	700	700	750	800	900	900	950
RAM SURFACE	I	mm	400 x 1500	450 x 1700	540 x 2000	540 x 2000	600 x 2400	650 X 2600	700 X 2800	750 X 3000
DISTANCE BETWEEN TWO BODY	E	mm	1200	1400	1700	1900	2100	2200	2300	2450
THROAT DEPTH	J	mm	375	400	450	475	475	4750	500	500
RAM SPEED UNLOADED		mm/sec	270	260	240	240	240	230	220	200
RAM SPEED UNDER LOADED		mm/sec	22	20	18	18	16	15	14	14
RAM RETURN SPEED		mm/sec	230	220	220	220	220	220	220	220
PRESS WIDTH	B	mm	2300	2400	2400	2500	2600	2800	3000	3200
PRESS HEIGHT	A	mm	3650	3900	3900	4050	4200	4400	4550	5100
PRESS DEPTH	C	mm	1950	2000	2075	2150	2200	2300	2300	2400
PRESS WEIGHT		Kg	21000	23500	26500	29000	33000	36500	39000	44000
MOTRO POWER		Kw	16	18	22	22	30	37	37	45
MOTOR SPEED		rev/min.	1450	1450	1450	1450	1450	1450	1450	1450

WE RESERVE THE RIGHTS TO MAKE CHANGES IN DESING AND DRAWING.



- Sheet metal cutting tools
- Sheet metal form tools
- Hot brass forging
- Hot steel forging
- Deep drawing molds
- Cold steel forging and forming
- Deep drawing molds
- Cold forged aluminum and steel
- Automotive and spare parts industry
- White goods
- No pit required.

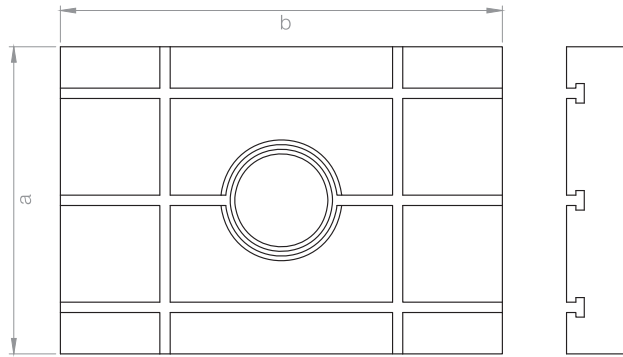
CE



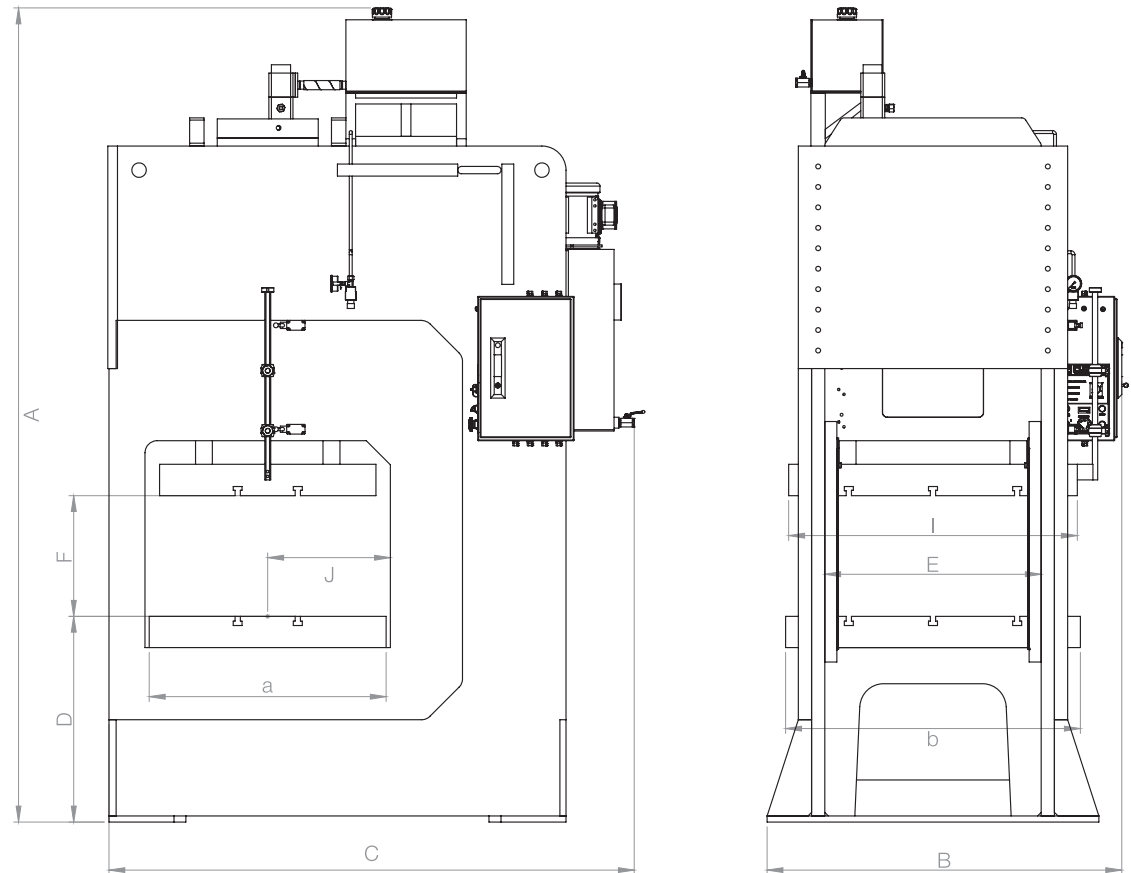
D FRAME HYDRAULIC PRESS

- Steel construction body
- 8 on the surface of the guide ram
- T-Channel home plate and ram
- Precision adjustable stroke
- Automatic central lubrication
- Electronic automatic counter
- PLC applications and screen
- Finger protection light barrier
- Compliance with CE norms
- Non-Standard table and stroke length
- Two - Hand Control
- Electric Control Pedal
- Ram inside the hydraulic ejector
- Ejection available on ram + table
- European automotive catering manufacturers, aerospace industries, plastic industries and many more.

**D FRAME
HYDRAULIC
TRANSFER
PRESS TABLE**



**D FRAME
HYDRAULIC
PRESS**



TECHNICAL SPECIFICATIONS		PRESS TYPE AND TONS													
MODEL			RHDP 30180	RHDP 40200	RHDP 60200	RHDP 80 250	RHDP 100250	RHDP 125275	RHDP 150300	RHDP 200325	RHDP 250350	RHDP 300350	RHDP 400400	RHDP 500450	RHDP 600450
CAPACITY	TONS		30	40	60	80	100	125	150	200	250	300	400	500	600
STROKE	mm		0 - 180	0 - 200	0 - 220	0 - 250	0 - 250	0 - 275	0 - 300	0 - 325	0 - 350	0 - 350	0 - 400	0 - 450	0 - 450
TABLE DIMENSIONS	a x b	mm	450 x 550	460 x 580	550 x 700	600 x 740	600 x 800	600 x 820	640 x 930	720 x 950	740 x 980	760 x 1050	780 X 1100	800 X 1200	850 X 1200
DAYLIGHT	F	mm	300	330	350	380	400	425	450	500	550	600	650	700	700
RAM SURFACE	I	mm	390 x 150	440 x 195	540 X 240	540 x 250	540 x 300	590 x 320	620 x 340	640 x 360	660 x 380	690 x 400	740 X 500	790 X 600	790 X 600
DISTANCE BETWEEN TWO BODY	E	mm	400	450	550	550	550	600	630	650	675	700	750	800	800
THROAT DEPTH	J	mm	225	230	275	300	300	300	320	360	370	380	390	400	425
TABLE DIAMETER HOLE		mm	120	150	160	190	200	220	240	250	260	270	280	300	300
RAM SPEED UNLOADED		mm/sec	330	330	280	280	270	270	260	240	240	240	200	200	200
RAM SPEED UNDER LOADED		mm/sec	26	26	24	23	22	20	20	18	18	16	14	14	14
RAM RETURN SPEED		mm/sec	240	240	235	235	230	230	220	220	220	220	180	180	180
PRESS WIDTH	B	mm	840	880	1000	1050	1070	1100	1200	1300	1450	1600	1700	1750	1800
PRESS HEIGHT	A	mm	2300	2400	2600	2900	3250	3250	3500	3700	3950	4250	4350	4500	4650
PRESS DEPTH	C	mm	1130	1150	1200	1300	1500	1650	1800	2100	2250	2350	2400	2500	2600
PRESS WEIGHT		Kg	1180	2600	3900	4200	6300	7800	9500	14000	18000	24000	29000	34000	38000
MOTRO POWER		Kw	5.5	7.5	11	11	16	16	18	22	22	30	37	45	45
MOTOR SPEED		rev/min.	1450	1450	1450	1450	1450	1450	1450	1450	1450	1450	1450	1450	1450

WE RESERVE THE RIGHTS TO MAKE CHANGES IN DESING AND DRAWING.

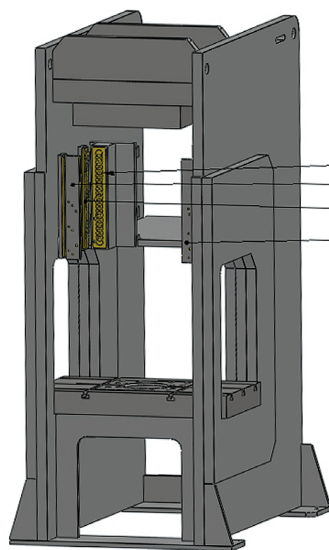


FEATURES

DIFFERENCE BETWEEN HYDRAULIC and MECHANICAL PRESSES

- Our presses are steel body, rigid frame construction for more accuracy.
- The machine structure is C, H & D-frame. All the parts are included in machine body, the operation is safe and user friendly.
- The machines are multi purpose applications and we are able to be customise the design and enhance functions meet your special requirements.
- Machines are environmentally friendly in all respects.
- Easy maintenance and few breakdowns.

“Where Speed meets Quality”

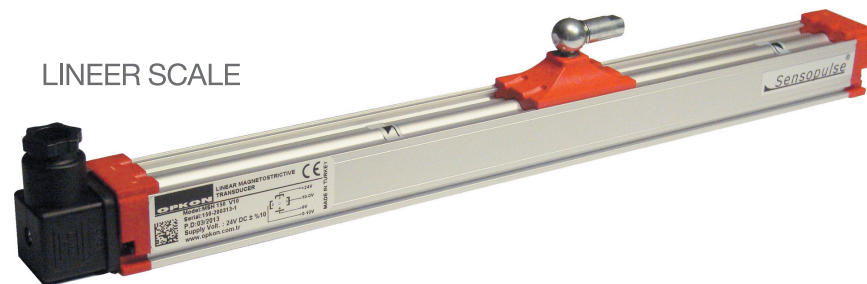


MONOBLOCK FRAME
AND EIGHT SLIDES

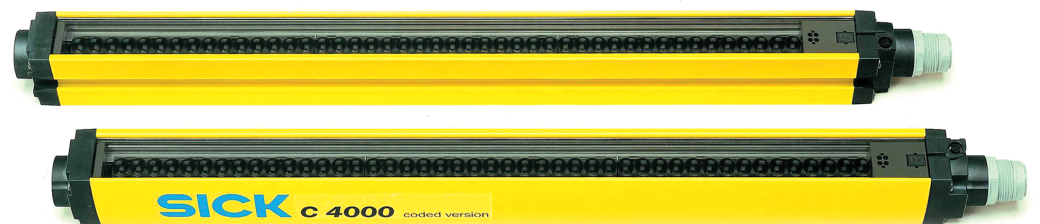
LOCKED SWITCH

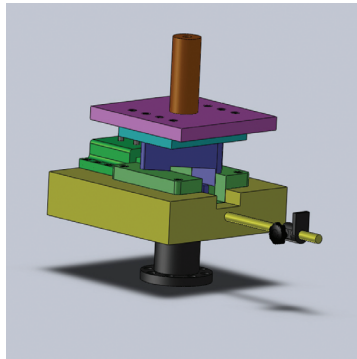


LINEER SCALE

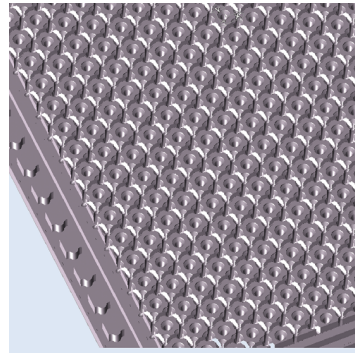


BEAM BARRIER

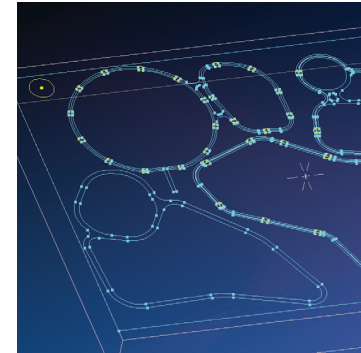




CUTTING DIE

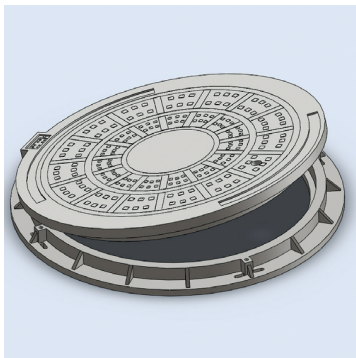


RUBBER MOULD

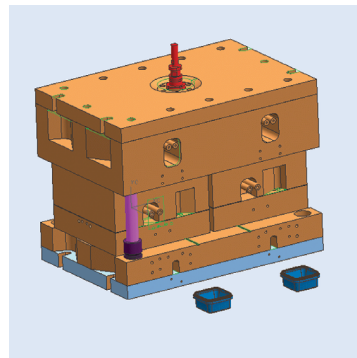


RUBBER MOULD

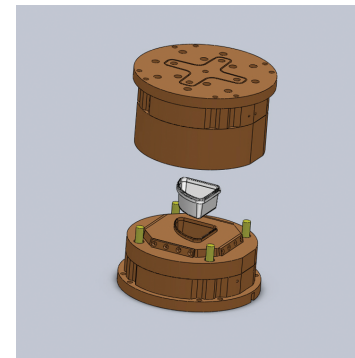
*Special Works, Special Machines ...
For all types of needs, special design and equipment.*



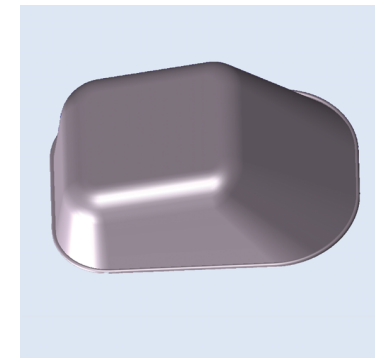
COMPOSIT MOULD



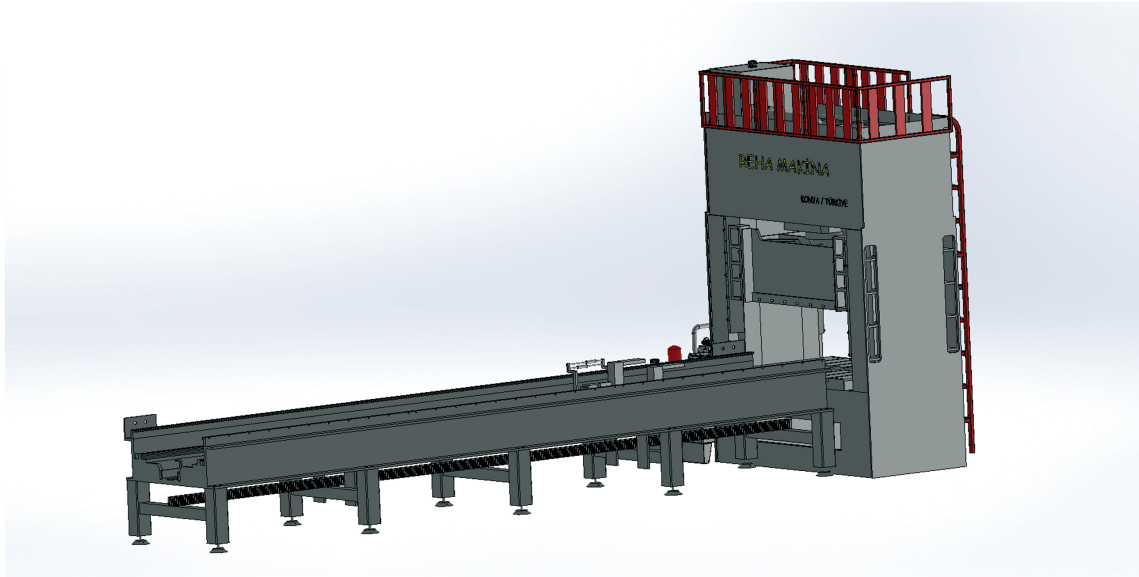
PLASTIC INJECTION
MOULD



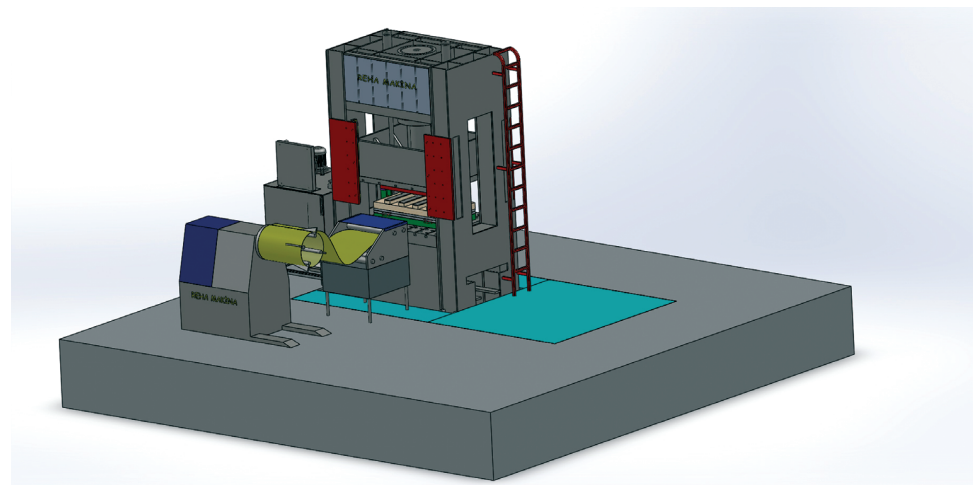
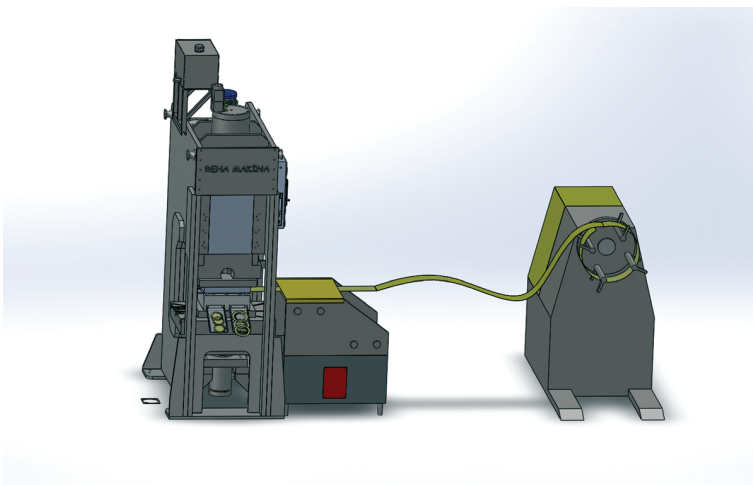
PLASTIC INJECTION
MOULD



DEEP DRAWING
MOULD

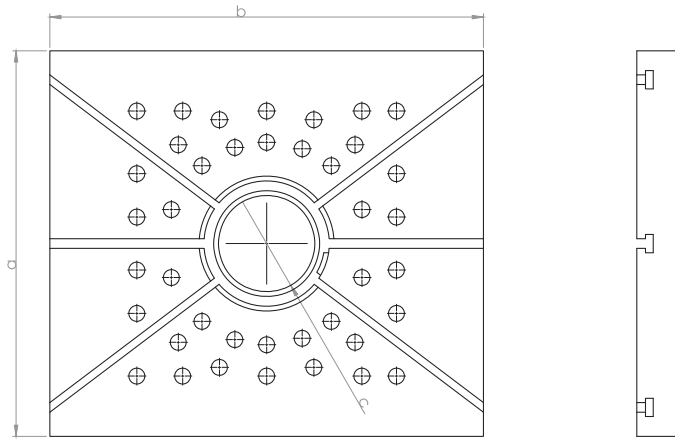


*Special Works, Special Machines ...
For all types of needs, special design and equipment.*

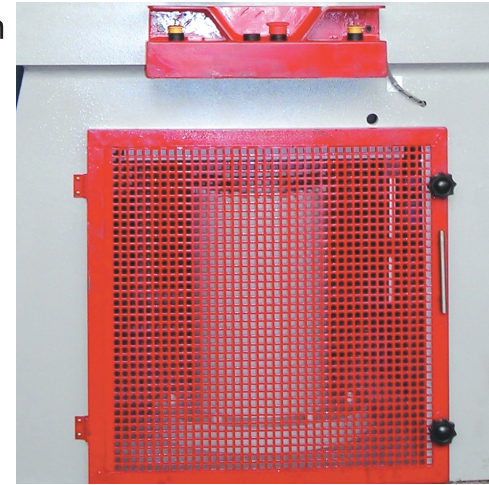


OPTIONS:

Extra Table



Extra Cusion



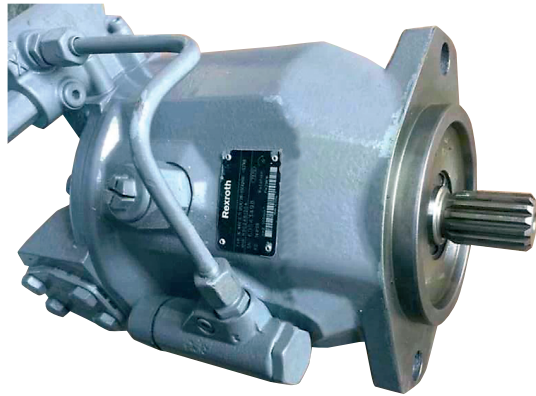
Screens
SIEMENS



PLC Control Every Action

Screens
BEIJER

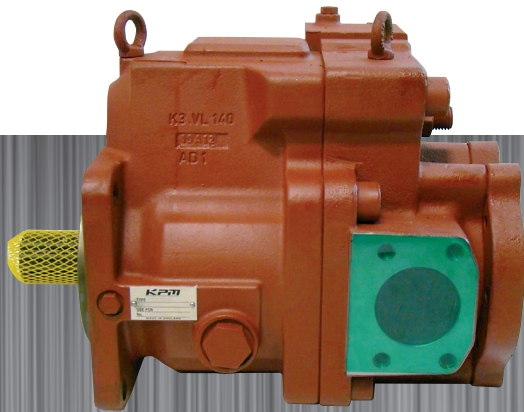




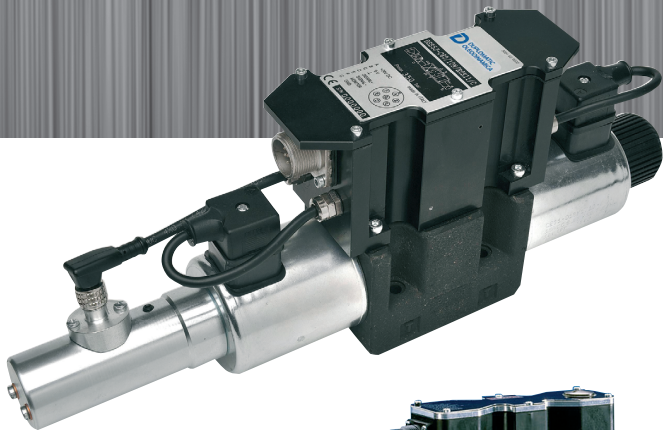
PUMP FEATURES:

- SAE and ISO mount. • Small installation envelope. • Through drive.
- SAE and metric ports. • Side and rear porting. • Vertical mount capability.
- Multiple drain ports. • CW and CCW rotation. • Opposed stroking pistons.
- Rated pressure 320 bar. • Swash plate pillow support. • Maximum displacement stop. • Servo assist springs.
- Hydrostatic pillow bearing. • Overcentre bleed. • Pressure compensation.
- Integral proportional pressure. • Load sensing. • Integral unload.
- Torque limiter. • Rigid construction. • Long life roller bearings.
- Various sealing options. • Low pulsation. • Proven rotating group.
- Separate swash plate. • Spherical valve plate. • Super-finished bores.
- Solid pistons.

PUMP NOISE: an average of 60 dB (A) an average of 60 dB(A)

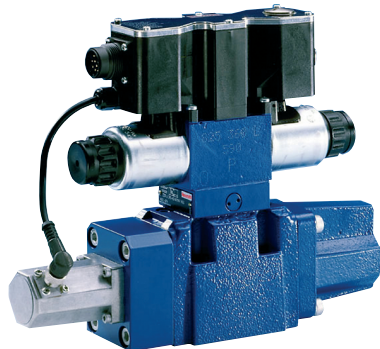
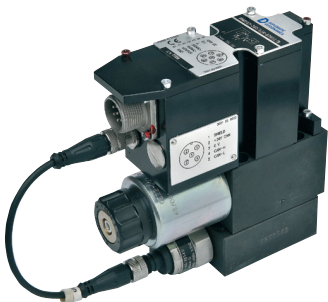


European certified used electrical and hydraulic equipment



VALVES FEATURES:

- The DSE5J is a direct operated directional valve with integrated electric proportional control, feedback and mounting interface in compliance with ISO 4401 (CETOP RP 121H) standards.
- It is normally used to control the direction and the speed of hydraulic actuators.
- The valve opening and hence flow rate can be modulated continuously in proportion to the reference signal. Transducer and digital card allow a fine control of the positioning of the cursor, reducing hysteresis and response time and optimizing the performance of the valve.
- The valve is easy to install. The driver directly manages digital settings. In the case of special applications, you can customize the settings using the optional kit.



SUPPLIER of UK, WESTERN EUROPE,
SOUTHERN AFRICA and AUSTRALIA



ZEBRA
WORLDWIDE MACHINERY

www.zebramachinery.com

REHA
MACHINERY

SINCE 1986

Fevzi Çakmak Mahallesi ASTİM Sanayi Sitesi 10753 Sokak No: 20/F
Karatay / KONYA / TURKEY
Tel : +90332 346 34 40 Faks : +90332 346 34 41
E-Mail: info@rehamakina.com

www.rehamakina.com

